



ACA CONCUSSION MANAGEMENT PROTOCOL: Provincial and Club level (2019-2020)

Prepared by ACA medical staff, last update: August 2019.

Alpine Canada Alpin has developed the **Alpine Canada Concussion Protocol** to help guide the management of athletes who may have a suspected concussion as a result of participation in **Alpine skiing - related** activities, in conjunction with the Parachute Canada harmonized Sport concussion protocol.

Purpose

This protocol covers the recognition, medical diagnosis, and management of **ATHLETES** who may sustain a suspected concussion during a sport activity. It aims to ensure that athletes with a suspected concussion receive timely and appropriate care and proper management to allow them to return back to their sport safely. This protocol may not address every possible clinical scenario that can occur during sport-related activities but includes critical elements based on the latest evidence and current expert consensus.

Who should use this protocol?

This protocol is intended for use by all individuals who interact with athletes inside and outside the context of school and non-school based organized sports activity, including athletes, parents, coaches, officials, teachers, trainers, and licensed healthcare professionals.

For a summary of the **Alpine Canada Alpin Concussion Protocol** please refer to the **Concussion Pathway** figure at the end of this document.

1. Pre-Season Education

Despite recent increased attention focusing on concussion there is a continued need to improve concussion education and awareness. Optimizing the prevention and management of concussion depends highly on annual education of all sport stakeholders (athletes, parents, coaches, officials, teachers, trainers, licensed healthcare professionals) on current evidence-informed approaches that can prevent concussion and more serious forms of head injury and help identify and manage an athlete with a suspected concussion.

Concussion education should include information on:

- the definition of concussion,
- possible mechanisms of injury,
- common signs and symptoms,



- steps that can be taken to prevent concussions and other injuries from occurring in sport.
 - what to do when an athlete has suffered a suspected concussion or more serious head injury,
 - what measures should be taken to ensure proper medical assessment,
 - *Return-to-School* and *Return-to-Sport Strategies*, and
 - Return to sport medical clearance requirements
- **Who:** Athletes, parents, coaches, officials, teachers, and trainers, licensed healthcare professionals
- **How:** Pre-season Concussion Education Sheet

All parents and athletes are required to review and submit a signed copy of the *Pre-season Concussion Education Sheet* to their coach prior to the first practice of the season. In addition to reviewing information on concussion, it is also important that all sport stakeholders have a clear understanding of the **Alpine Canada Concussion Protocol**. For example, this can be accomplished through pre-season in-person orientation sessions for athletes, parents, coaches and other sport stakeholders.

2. Baseline Testing

Current Evidence does not support the use of widespread baseline concussion testing in youth or adult recreational athletes. If a medical doctor who works regularly with a team or organization is available to offer baseline testing, and subsequent follow up following a suspected concussion, Baseline testing may be considered. This would serve a role of education, reviewing relevant concussion and past medical history, as well as a baseline preparticipation examination.

3. Head Injury Recognition

Although the formal diagnosis of concussion should be made following a medical assessment, all sport stakeholders including athletes, parents, teachers, coaches, teachers, officials, and licensed healthcare professionals are responsible for the recognition and reporting of athletes who may demonstrate visual signs of a head injury or who report concussion-related symptoms. This is particularly important because many sport and recreation venues will not have access to on-site licensed healthcare professionals.

A concussion should be suspected:



- in any athlete who sustains a significant impact to the head, face, neck, or body and demonstrates *ANY* of the visual signs of a suspected concussion or reports *ANY* symptoms of a suspected concussion as detailed in the *Concussion Recognition Tool 5*.
- if a player reports *ANY* concussion symptoms to one of their peers, parents, teachers, or coaches or if anyone witnesses an athlete exhibiting any of the visual signs of concussion.

In some cases, an athlete may demonstrate signs or symptoms of a more severe head or spine injury including convulsions, worsening headaches, vomiting or neck pain. If an athlete demonstrates any of the 'Red Flags' indicated by the *Concussion Recognition Tool 5*, a more severe head or spine injury should be suspected, and Emergency Medical Assessment should be pursued.

- **Who:** Athletes, parents, coaches, officials, teachers, trainers, and licensed healthcare professionals
- **How:** [Concussion Recognition Tool 5](#)

4. Onsite Medical Assessment

Depending on the suspected severity of the injury, an initial assessment may be completed by emergency medical professionals or by an on-site licensed healthcare professional where available. In cases where an athlete loses consciousness or it is suspected an athlete might have a more severe head or spine injury, Emergency Medical Assessment by emergency medical professionals should take place (see 3a below). If a more severe injury is not suspected, the athlete should undergo Sideline Medical Assessment or Medical Assessment, depending on if there is a licensed healthcare professional present (see 3b below).

4a. Emergency Medical Assessment

If an athlete is suspected of sustaining a more severe head or spine injury during a game or practice, an ambulance should be called immediately to transfer the patient to the nearest emergency department for further Medical Assessment.

Coaches, parents, teachers, trainers and officials should not make any effort to remove equipment or move the athlete until an ambulance has arrived and the athlete should not be left alone until the ambulance arrives. After the emergency, medical services staff has completed the Emergency Medical Assessment, the athlete should be transferred to the nearest hospital for Medical Assessment. In the case of youth (under 18 years of age), the



athlete's parents should be contacted immediately to inform them of the athlete's injury. For athletes over 18 years of age, their emergency contact person should be contacted if one has been provided

- **Who:** Emergency/trained medical professionals

4b. Sideline Medical Assessment

If an athlete is suspected of sustaining a concussion and there is no concern for a more serious head or spine injury, the player should be immediately removed from the field of play.

Scenario 1: If a licensed healthcare professional is present

The athlete should be taken to a quiet area and undergo Sideline Medical Assessment using the Sport Concussion Assessment Tool 5 (SCAT5) or the Child SCAT5. The SCAT5 and Child SCAT5 are clinical tools that should only be used by a licensed healthcare professional that has experience using these tools. It is important to note that the results of SCAT5 and Child SCAT5 testing can be normal in the setting of acute concussion. As such, these tools can be used by licensed healthcare professionals to document initial neurological status but should not be used to make sideline return-to- sport decisions in youth athletes. Any youth athlete who is suspected of having sustained a concussion must not return to the game or practice and must be referred for Medical Assessment.

If a youth athlete is removed from play following a significant impact and has undergone assessment by a licensed healthcare professional, but there are NO visual signs of a concussion and the athlete reports NO concussion symptoms then the athlete can be returned to play but should be monitored for delayed symptoms.

In the case of national team-affiliated athletes (age 18 years and older), an experienced certified athletic therapist, physiotherapist or medical doctor providing medical coverage for the sporting event may make the determination that a concussion has not occurred based on the results of the Sideline Medical Assessment. In these cases, the athlete may be returned to the practice or game without a *Medical Clearance Letter* but this should be clearly communicated to the coaching staff. Players that have been cleared to return to games or practices should be monitored for delayed symptoms. If the athlete develops any delayed symptoms the athlete should be removed from play and undergo medical assessment by a medical doctor or nurse practitioner.

Scenario 2: If there is no licensed healthcare professional present



The athlete should be referred immediately for medical assessment by a medical doctor or nurse practitioner, and the athlete must not return to play until receiving medical clearance.

- ▶ **Who:** Athletic therapists, physiotherapists, medical doctor
- ▶ **How:** [*Sport Concussion Assessment Tool 5 \(SCAT5\)*](#), [*Child Sport Concussion Assessment Tool 5 \(Child SCAT5\)*](#)

5. Medical Assessment

In order to provide comprehensive evaluation of athletes with a suspected concussion, the medical assessment must rule out more serious forms of traumatic brain and spine injuries, must rule out medical and neurological conditions that can present with concussion-like symptoms, and must make the diagnosis of concussion based on findings of the clinical history and physical examination and the evidence-based use of adjunctive tests as indicated (i.e CT scan). In addition to nurse practitioners, medical doctors¹ that are qualified to evaluate patients with a suspected concussion include: pediatricians; family medicine, sports medicine, emergency department, internal medicine, and rehabilitation (physiatrists) physicians; neurologists; and neurosurgeons.

In geographic regions of Canada with limited access to medical doctors (i.e. rural or northern communities), a licensed healthcare professional (i.e. nurse) with pre-arranged access to a medical doctor or nurse practitioner can facilitate this role. The medical assessment is responsible for determining whether the athlete has been diagnosed with a concussion or not. Athletes with a diagnosed concussion should be provided with a *Medical Assessment Letter* indicating a concussion has been diagnosed. Athletes that are determined to have not sustained a concussion must be provided with a *Medical Assessment Letter* indicating a concussion has not been diagnosed and the athlete can return to school, work and sports activities without restriction.

- ▶ **Who:** Medical doctor, nurse practitioner, nurse
- ▶ **How:** *Medical Assessment Letter*

6. Concussion Management

When an athlete has been diagnosed with a concussion, it is important that the athlete's parent/legal guardian is informed. All athletes diagnosed with a concussion must be provided

¹ Medical doctors and nurse practitioners are the only healthcare professionals in Canada with licensed training and expertise to meet these needs; therefore all athletes with a suspected concussion should undergo evaluation by one of these professionals.



with a standardized *Medical Assessment Letter* that notifies the athlete and their parents/legal guardians/spouse that they have been diagnosed with a concussion and may not return to any activities with a risk of concussion until medically cleared to do so by a medical doctor or nurse practitioner. Because the *Medical Assessment Letter* contains personal health information, it is the responsibility of the athlete or their parent/legal guardian to provide this documentation to the athlete's coaches, teachers, or employers. It is also important for the athlete to provide this information to sport organization officials that are responsible for injury reporting and concussion surveillance where applicable.

Athletes diagnosed with a concussion should be provided with education about the signs and symptoms of concussion, strategies about how to manage their symptoms, the risks of returning to sport without medical clearance and recommendations regarding a gradual return to school and sport activities. Athletes diagnosed with a concussion are to be managed according to their *Return-to-School and Sport-Specific Return-to-Sport Strategy* under the supervision of a medical doctor or nurse practitioner. When available, athletes should be encouraged to work with the team athletic therapist or physiotherapist to optimize progression through their *Sport-Specific Return-to-Sport Strategy*. Once the athlete has completed their *Return-to-School and Sport-Specific Return-to-Sport Strategy* and are deemed to be clinically recovered from their concussion, the medical doctor or nurse practitioner can consider the athlete for a return to full sports activities and issue a *Medical Clearance Letter*.

The stepwise progressions for *Return-to-School* and *Return-to-Sport Strategies* are outlined below. As indicated in stage 1 of the *Return-to-Sport Strategy*, reintroduction of daily, school, and work activities using the *Return-to-School Strategy* must precede return to sport participation.

Return-to-School Strategy

The following is an outline of the *Return-to-School Strategy* that should be used to help student-athletes, parents, and teachers to collaborate in allowing the athlete to make a gradual return to school activities. Depending on the severity and type of the symptoms present student-athletes will progress through the following stages at different rates. If the student-athlete experiences new symptoms or worsening symptoms at any stage, they should go back to the previous stage. Athletes should also be encouraged to ask their school if they have a school-specific Return-to-Learn Program in place to help student-athletes make a gradual return to school.



Stage	Aim	Activity	Goal of each step
1	Daily activities at home that do not give the student-athlete symptoms	Typical activities during the day as long as they do not increase symptoms (i.e. reading, texting, screen time). Start at 5-15 minutes at a time and gradually build up.	Gradual return to typical activities
2	School activities	Homework, reading or other cognitive activities outside of the classroom.	Increase tolerance to cognitive work
3	Return to school part-time	Gradual introduction of schoolwork. May need to start with a partial school day or with increased breaks during the day.	Increase academic activities
4	Return to school full-time	Gradually progress	Return to full academic activities and catch up on missed school work

Alpine Canada Alpin -Specific Return-to-Sport Strategy

The following is an outline of the Return-to-Sport Strategy that should be used to help athletes, coaches, trainers, and medical professionals to partner in allowing the athlete to make a gradual return to sport activities. An initial period of 24-48 hours of rest is recommended before starting the *Alpine skiing-Specific Return-to-Sport Strategy*. If the athlete experiences new symptoms or worsening symptoms at any stage, they should go back to the previous stage. It is important that youth and adult student-athletes **return to full-time school activities** before progressing to stage 5 and 6 of the Alpine Skiing -Specific Return-to-Sport Strategy. It is also important that all athletes provide their coach with a *Medical Clearance Letter* prior to returning to full contact sport activities.

Stage	Aim	Activity	Goal of each step
1	Symptom-limiting activity	Daily activities that do not provoke symptoms	Gradual re-introduction of work/school activities
2	Light aerobic activity	Light jog or stationary cycling at slow to medium pace. No resistance training -Light intensity jogging or stationary cycling for 15-20 minutes at sub-symptom threshold intensity	Increase heart rate
3	Sport-specific exercise	Running/ dryland drills. No head impact activities - Moderate intensity jogging for 30-60 minutes at sub-symptom threshold intensity - Low intensity freeskiing max 60 mins on snow time. - No head impact	Add movement
4	Non-contact training drills	Harder training drills, i.e. introduction of on-hill drills and easy gate training (stubbies, no hitting of the gates) up to a half day of training total - May start progressive resistance training	Exercise, coordination and increased thinking



		- Participation in higher intensity running and dryland drills - low-contact on hill training	
5	Full contact practice	Following medical clearance - Participation in full training without activity restriction	Restore confidence and assess functional skills by coaching staff
6	Return to sport	Return to competition/ race day	

- ▶ **Who:** Medical doctor, nurse practitioner and team athletic therapist or physiotherapist (where available)
- ▶ **How:** *Return-to-Learn Strategy, Sport-Specific Return-to Sport Strategy, Medical Assessment Letter*

6. Multidisciplinary Concussion Care

Most athletes who sustain a concussion while participating in sport will make a complete recovery and be able to return to full school and sport activities within 1-4 weeks of injury. However, approximately 15-30% of individuals will experience symptoms that persist beyond this time frame. If available, individuals who experience persistent post-concussion symptoms (>4 weeks for youth athletes, >2 weeks for adult athletes) may benefit from referral to a medically supervised multidisciplinary concussion clinic that has access to professionals with licensed training in traumatic brain injury that may include experts in sport medicine, neuropsychology, physiotherapy, occupational therapy, neurology, neurosurgery, and rehabilitation medicine.

Referral to a multidisciplinary clinic for assessment should be made on an individualized basis at the discretion of an athlete's medical doctor or nurse practitioner. If access to a multidisciplinary concussion clinic is not available, a referral to a medical doctor with clinical training and experience in concussion (e.g. a sport medicine physician, neurologist, or rehabilitation medicine physician) should be considered for the purposes of developing an individualized treatment plan. Depending on the clinical presentation of the individual, this treatment plan may involve a variety of health care professionals with areas of expertise that address the specific needs of the athlete based on the assessment findings.

- ▶ **Who:** Multidisciplinary medical team, medical doctor with clinical training and experience in concussion (e.g. a sports medicine physician, neurologist, or rehabilitation medicine physician), licensed healthcare professionals.



7. Return to Sport

Athletes who have been determined to have not sustained a concussion and those that have been diagnosed with a concussion and have successfully completed their *Return-to-School and Alpine skiing Specific Return-to-Sport Strategy* can be considered for return to full sports activities. The final decision to medically clear an athlete to return to full game activity should be based on the clinical judgment of the medical doctor or nurse practitioner taking into account the athlete's past medical history, clinical history, physical examination findings and the results of other tests and clinical consultations where indicated (i.e. neuropsychological testing, diagnostic imaging). Prior to returning to full contact practice and game play, each athlete that has been diagnosed with a concussion must provide their coach with a standardized *Medical Clearance Letter* that specifies that a medical doctor or nurse practitioner has personally evaluated the patient and has cleared the athlete to return to sports. In geographic regions of Canada with limited access to medical doctors (i.e. rural or northern communities), a licensed healthcare professional (such as a nurse) with pre-arranged access to a medical doctor or nurse practitioner can provide this documentation. A copy of the *Medical Clearance Letter* should also be submitted to sports organization officials that have injury reporting and surveillance programs where applicable.

Athletes who have been provided with a *Medical Clearance Letter* may return to full sport activities as tolerated. If the athlete experiences any new concussion-like symptoms while returning to play, they should be instructed to stop playing immediately, notify their parents, coaches, trainer or teachers, and undergo follow-up *Medical Assessment*. In the event that the athlete sustains a new suspected concussion, the **Alpine Canada Alpin Concussion Protocol** should be followed as outlined here.

- **Who:** Medical doctor, nurse practitioner
- **Document:** *Medical Clearance Letter*



Medical Assessment Letter

Date: _____ Athlete's Name: _____

To whom it may concern,

Athletes who sustain a suspected concussion should be managed according to the *Canadian Guideline on Concussion in Sport*. Accordingly, I have personally completed a Medical Assessment on this patient.

Results of Medical Assessment

- This patient has not been diagnosed with a concussion and can resume full participation in school, work, and sport activities without restriction.
- This patient has not been diagnosed with a concussion but the assessment led to the following diagnosis and recommendations:

- This patient has been diagnosed with a concussion.

The goal of concussion management is to allow complete recovery of the patient's concussion by promoting a safe and gradual return to school and sport activities. The patient has been instructed to avoid all recreational and organized sports or activities that could potentially place them at risk of another concussion or head injury. Starting on _____ (date), I would ask that the patient be allowed to participate in school and low-risk physical activities as tolerated and only at a level that does not bring on or worsen their concussion symptoms. The above patient should not return to any full contact practices or games until the coach has been provided with a *Medical Clearance Letter* provided by a medical doctor or nurse practitioner in accordance with the *Canadian Guideline on Concussion in Sport*.

Other comments:

Thank-you very much in advance for your understanding.

Yours Sincerely,

Signature/print _____ M.D. / N.P. (circle appropriate designation)*

**In rural or northern regions, the Medical Assessment Letter may be completed by a nurse with pre-arranged access to a medical doctor or nurse practitioner. Forms completed by other licensed healthcare professionals should not otherwise be accepted.*

We recommend that this document be provided to the athlete without charge.



Medical Clearance Letter

Date: _____ Athlete's Name: _____

To whom it may concern,

Athletes who are diagnosed with a concussion should be managed according to the *Canadian Guideline on Concussion in Sport* including the *Return-to-School* and *Return-to-Sport Strategies* (see page 2 of this letter). Accordingly, the above athlete has been medically cleared to participate in the following activities as tolerated effective the date stated above (please check all that apply):

- Symptom-limiting activity (cognitive and physical activities that don't provoke symptoms)**
- Light aerobic activity (Walking or stationary cycling at slow to medium pace. No resistance training)**
- Sport-specific exercise (Running or skating drills. No head impact activities)**
- Non-contact practice (Harder training drills, e.g. passing drills. May start progressive resistance training. Including gym class activities without a risk of contact, e.g. tennis, running, swimming)**
- Full-contact practice (Including gym class activities with risk of contact and head impact, e.g. soccer, dodgeball, basketball)**
- Full game play**

What if symptoms recur? Any athlete who has been cleared for physical activities, gym class or non-contact practice, and who has a recurrence of symptoms, should immediately remove himself or herself from the activity and inform the teacher or coach. If the symptoms subside, the athlete may continue to participate in these activities as tolerated.

Athletes who have been cleared for full contact practice or game play must be able to participate in full-time school (or normal cognitive activity) as well as high intensity resistance and endurance exercise (including non-contact practice) without symptom recurrence. Any athlete who has been cleared for full-contact practice or full game play and has a recurrence of symptoms, should immediately remove himself or herself from play, inform their teacher or coach, and undergo medical assessment by a medical doctor or nurse practitioner before returning to full-contact practice or games.

Any athlete who returns to practices or games and sustains a new suspected concussion should be managed according to the *Canadian Guideline on Concussion in Sport*.

Other comments:

Thank-you very much in advance for your understanding.
Yours Sincerely,

Signature/print _____ M.D. / N.P. (circle appropriate designation)*

**In rural or northern regions, the Medical Clearance Letter may be completed by a nurse with pre-arranged access to a medical doctor or nurse practitioner. Forms completed by other licensed healthcare professionals should not otherwise be accepted.*

We recommend that this document be provided to the athlete without charge.



Return-to-School Strategy¹

The following is an outline of the *Return-to-School Strategy* that should be used to help student-athletes, parents, and teachers to partner in allowing the athlete to make a gradual return to school activities. Depending on the severity and type of the symptoms present, student-athletes will progress through the following stages at different rates. If the student-athlete experiences new symptoms or worsening symptoms at any stage, they should go back to the previous stage.

Stage	Aim	Activity	Goal of each step
1	Daily activities at home that do not give the student-athlete symptoms	Typical activities during the day as long as they do not increase symptoms (i.e. reading, texting, screen time). Start at 5-15 minutes at a time and gradually build up.	Gradual return to typical activities.
2	School activities	Homework, reading or other cognitive activities outside of the classroom.	Increase tolerance to cognitive work.
3	Return to school part-time	Gradual introduction of schoolwork. May need to start with a partial school day or with increased breaks during the day.	Increase academic activities.
4	Return to school full-time	Gradually progress.	Return to full academic activities and catch up on missed school work.

Sport-Specific Return-to-Sport Strategy¹

The following is an outline of the *Return-to-Sport Strategy* that should be used to help athletes, coaches, trainers, and medical professionals to partner in allowing the athlete to make a gradual return to sport activities. Activities should be tailored to create a sport-specific strategy that helps the athlete return to their respective sport.

An initial period of 24-48 hours of rest is recommended before starting their *Sport-Specific Return-to-Sport Strategy*. If the athlete experiences new symptoms or worsening symptoms at any stage, they should go back to the previous stage. It is important that youth and adult student-athletes return to full-time school activities before progressing to stage 5 and 6 of the *Sport-Specific Return-to-Sport Strategy*. It is also important that all athletes provide their coach with a *Medical Clearance Letter* prior to returning to full contact sport activities.

Stage	Aim	Activity	Goal of each step
1	Symptom-limiting activity	Daily activities that do not provoke symptoms.	Gradual re-introduction of work/school activities.
2	Light aerobic activity	Walking or stationary cycling at slow to medium pace. No resistance training.	Increase heart rate.
3	Sport-specific exercise	Running/ dryland drills. No head impact activities - Moderate intensity jogging for 30-60 minutes at sub-symptom threshold intensity - Low intensity freeskiing max 60 mins on snow time. - No head impact	Add movement.

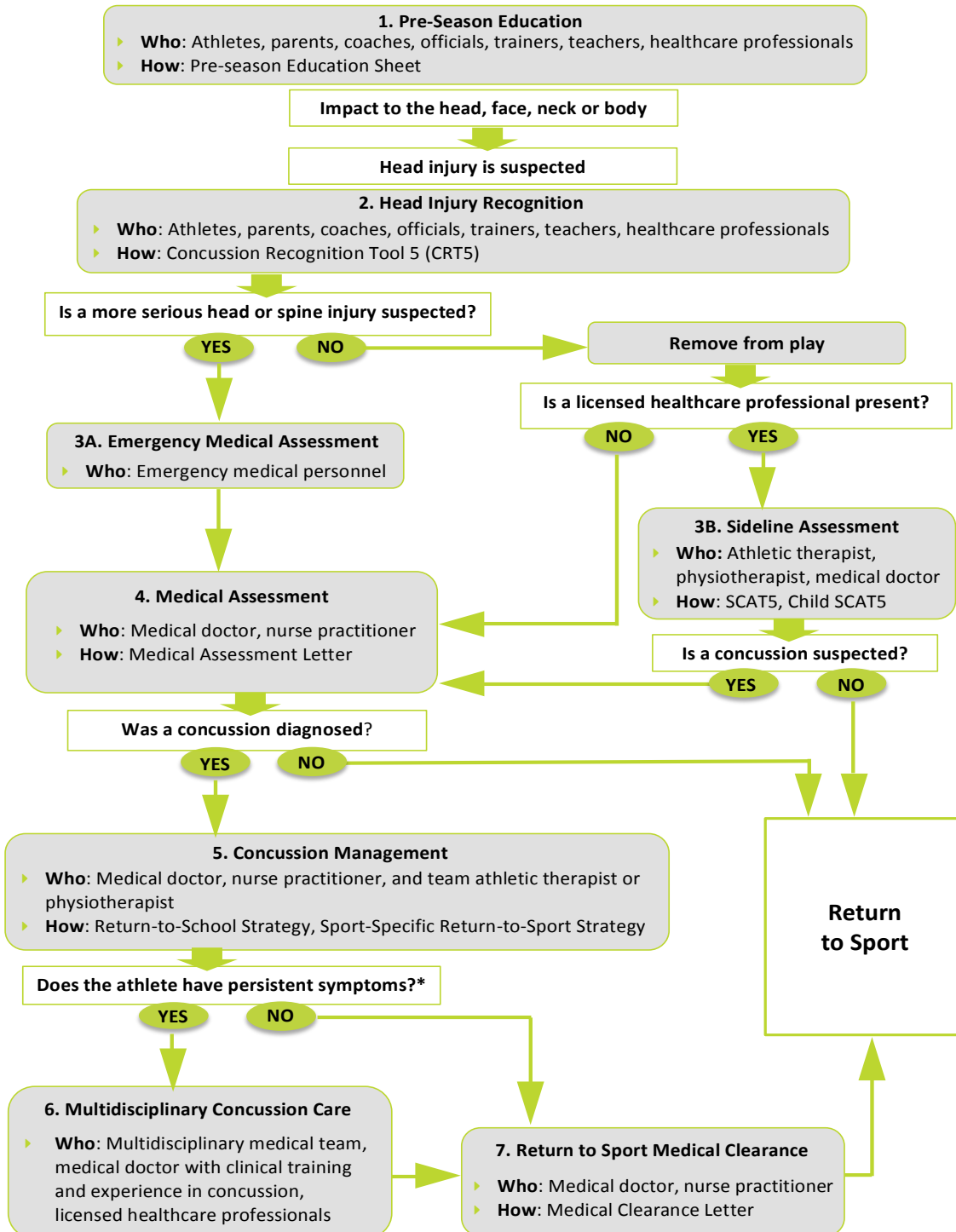


4	Non-contact training drills	Harder training drills, e.g. passing drills. May start progressive resistance training.	Exercise, coordination and increased thinking.
5	Full contact practice	Following medical clearance and complete return to school. <i>- Participation in full training without activity restriction</i>	Restore confidence and assess functional skills by coaching staff.
6	Return to sport	Normal competition.	

¹Source: McCrory et al. (2017). Consensus statement on concussion in sport – the 5th international conference on concussion in sport held in Berlin, October 2016. *British Journal of Sports Medicine*, 51(11), 838-847.
<http://dx.doi.org/10.1136/bjsports-2017-097699>



Alpine Canada Alpin Concussion Pathway



*Persistent symptoms: lasting > 4 weeks in children & youth or > 2 weeks in adults